



## **Nissan Navara NP300 (All Series) 2015 ON ROCK SLIDERS**

### **IMPORTANT! – READ BEFORE INSTALLATION**

- This product must be installed exactly as per these instructions using only hardware supplied.
- Take a few moments to read instructions thoroughly before beginning work.
- In the event of damage to any bar component please contact OFFROAD ANIMAL to arrange repair/replacement of components.
- Do not use this product for any vehicle make or model other than that specified on these instructions.
- Do not remove labels from this product.
- This product and its fixings must not be modified in any way unless stated in these fitting instructions.
- The installation of this product is recommended for trained personnel.
- These instructions are correct at time of publication. OFFROAD ANIMAL cannot be held responsible for the impact of any changes subsequently made by the vehicle manufacturer. If you find something has changed please contact us to let us know!
- During installation it is the duty of the installer to check correct operation/clearances of all components.
- If Instructions are to be printed for reference in the workshop, it is recommended that they are printed in colour, for best legibility.
- Fitting time estimated 1-2 hours

## GENERAL CARE AND MAINTENANCE

Only wash the product with a PH neutral car wash to prevent paint damage and discolouration.

Plastic parts may be maintained with silicone spray.

Do not use acidic or alkaline based cleaning products.

It is important to perform regular checks (pre trip or on an annual basis) on the installed product. Checks include:

- Visual inspection for damage (eg. cracks, chips, dents etc.)
- Electrical wiring is not rubbing anything or worn out
- Bolts are torqued to correct specification (see torque guide below)

For touching up small stone chips, Offroad Animal recommends the following paint products:

- Dupli-Color Trim & Bumper Paint Black (TB101)
- VHT Hood, Bumper & Trim Paint Black (SP27)

## BOLT TORQUE SETTINGS

Use the following bolt torques on all general fasteners, unless otherwise specified.

GENERAL FASTENERS	
Size	Torque Nm
M5	5 Nm
M6	9 Nm
M8	22 Nm
M10	44 Nm
M12	77 Nm

Use the following bolt torques on all structural front bar mount and tow point fasteners, and rear towbar fasteners, unless otherwise specified.

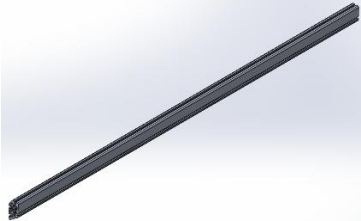
FRONT BAR MOUNTS AND TOW POINTS + REAR TOWBAR	
Size	Torque Nm
M10	57 Nm
M12	100 Nm
M14	164 Nm
M16	248 Nm

**Always use a torque wrench to set correct torque settings. Ensure torque wrench is set to Nm unit of measurement. Otherwise perform conversion to lb-ft.**

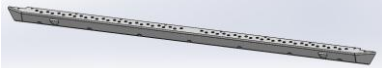
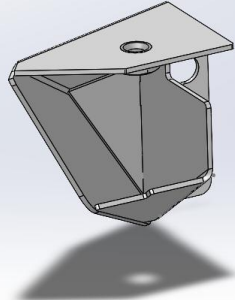
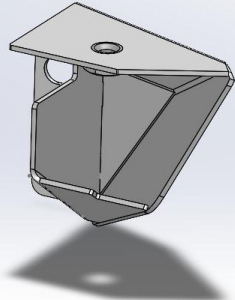
## PARTS LISTING

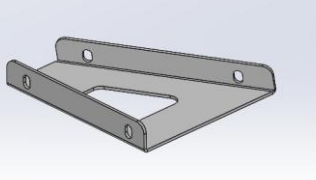
**IMPORTANT:** Check all parts are present before beginning work! Contact OFFROAD ANIMAL if something is missing.

### Extrusion Kit Parts – In the Box

Qty	Part Number	Description	Image
2	E-0002-1800	Slider extrusion - 1800MM	

### Step Kit Parts – In the

Qty	Part Number	Description	Image
2	B-0207	Slider Step – Suit 1800 Extrusion	
2	COM-RS-AEC	Angled Slider End Cap	
2	COM-RS-AECM	Angled Slider End Cap	

Qty	Part Number	Description	Image
<b>1</b>	RS-NNV-NP3-15-ASM2R	Nissan Navara NP300 Slider Front Mount Assy	
<b>1</b>	RS-NNV-NP3-15-ASM2L	Nissan Navara NP300 Slider Front Mount Assy	
<b>3</b>	RS-NNV-NP3-15-ASM3	Navara NP300 Mid/Rear Mount	
<b>3</b>	RS-NNV-NP3-15-ASM5	NP300 Navara Slider Mount Bottom Brace	
<b>1</b>	RS-NNV-NP3-15-ASM6	Navara Slider - Fuel Tank Mount	
<b>1</b>	B-0437L	NP300 Navara Slider Front Mount Bottom Brace	
<b>1</b>	B-0437R	NP300 Navara Slider Front Mount Bottom Brace	
<b>1</b>	B-0499	Navara NP300 Slider - Rear Fuel Tank Mount Brace	

**Bracket Kit Small Parts – Contained in Small Parts Kit Bag**

Qty	Part Number	Description
<b>4</b>	M12X90	Bolt Hex, M12X90x1.75, GR8.8 ZP
<b>32</b>	M8 FLANGE NUT	Flange Nut, M8x1.25 G8.8 ZP
<b>32</b>	M8 HD FLAT WASHER	M8 FLAT WASHER - High Tensile 19x8x1.9mm
<b>32</b>	M8 X 20 HEX	Bolt Hex, M8X20x1.25, GR8.8 ZP
<b>5</b>	M12X40	Bolt Hex, M12X40X1.75, GR8.8 ZP
<b>1</b>	M12X30	Bolt Hex, M12X30X1.75, GR8.8 ZP
<b>3</b>	M10 X 40	Bolt Hex, M10X40X1.5, GR8.8 ZP
<b>3</b>	M10 FW LHD	WASHER, FLAT M10X28.5X2.5
<b>4</b>	NP-COM-M12-300-ASM0	M12 NUT PLATE 300MM STEM
<b>3</b>	NP-COM-M10-190-ASM0	M10 LOLLYPOP NUT PLATE 190MM LONG
<b>24</b>	M10 FLANGE NUT	Flange Nut, M10x1.5 G8.8 ZP
<b>24</b>	M10 x 25	Bolt Hex, M10X25x[1.5], GR8.8 ZP
<b>1</b>	M12 FLANGE NUT	Flange Nut, M12x1.75 G8.8 ZP
<b>10</b>	M12 FW LHD	M12 FW Large Heavy Duty

**Step Kit Small Parts – Contained in Small Parts Kit Bag**

Qty	Part Number	Description
<b>34</b>	M8 FLAT WASHER BLACK ZINC	M8 FW- BLACK ZINC
<b>30</b>	M8 NUT	Hex Nut, M8x1.25 G8.8 ZP
<b>14</b>	M8X20 CAP SCREW	CAP SCREW, M8X20X1.25 GR10.9 ZP
<b>20</b>	M8 X 20 BHCS BLACK ZINC	SCREW, BUTTON HEAD CAP, M8X20X1.25 BLACK ZP
<b>8</b>	M10 FLANGE NUT	Flange Nut, M10x1.5 G8.8 ZP
<b>8</b>	M10 x 25	Bolt Hex, M10X25x[1.5], GR8.8 ZP
<b>2</b>	OFA-LOGO	OFFROAD ANIMAL METAL LOGO

## TOOLS REQUIRED

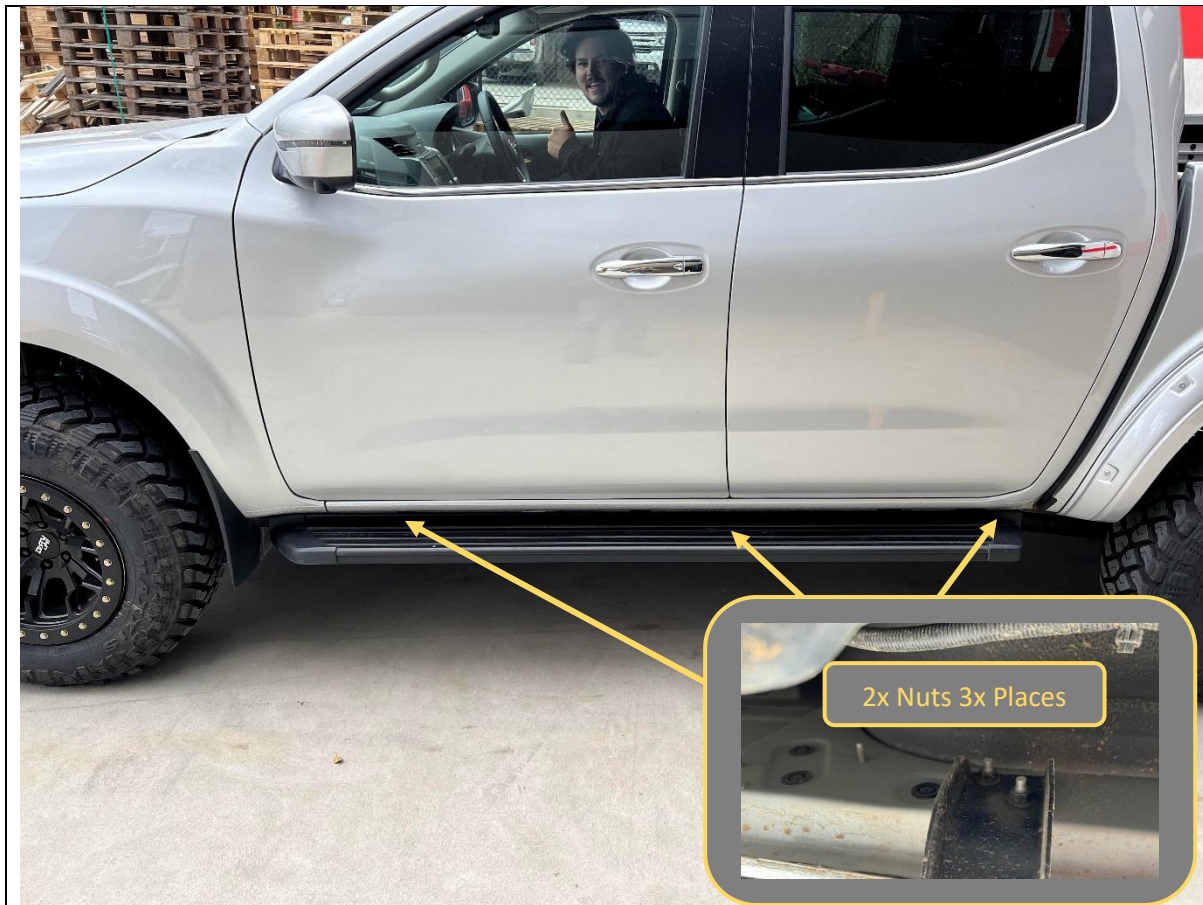
The following tools will be required to install the product.

Hand Tools	Power Tools	Workshop Equipment
Metric Socket Set 8-19mm Socket Extension Bar Metric Spanner Set 10-19mm Hex (Allen) Key Set 4-6mm Flat Blade Screwdriver set Phillips Head Screwdriver set Utility Knife Side Cutters Pliers	Electric/Air Impact Driver (Optional)	Hydraulic Floor Jack Wood Block

## WORKSHOP SAFETY

It is the responsibility of the installer to always complete works in a safe manner. Make sure the following safety equipment is available and precautions are observed whilst fitting this product.

<p>Hearing Protection</p> 	<p>Always wear ear protection when using power tools.</p>
<p>Eye Protection</p> 	<p>Ensure eye protection is always worn when cutting or drilling.</p>
<p>Manual Handling</p> 	<p>Do not attempt to lift bar assemblies or rock sliders on your own.</p> <p>Always use two people to lift or use mechanical Lifting aid such as hydraulic lifting trolley.</p>
<p>Vehicle Support</p> 	<p>Always ensure vehicle is properly supported when working on it. Do not attempt to fit products whilst suspension work is being carried out. Do not work under a vehicle supported only by a jack.</p>



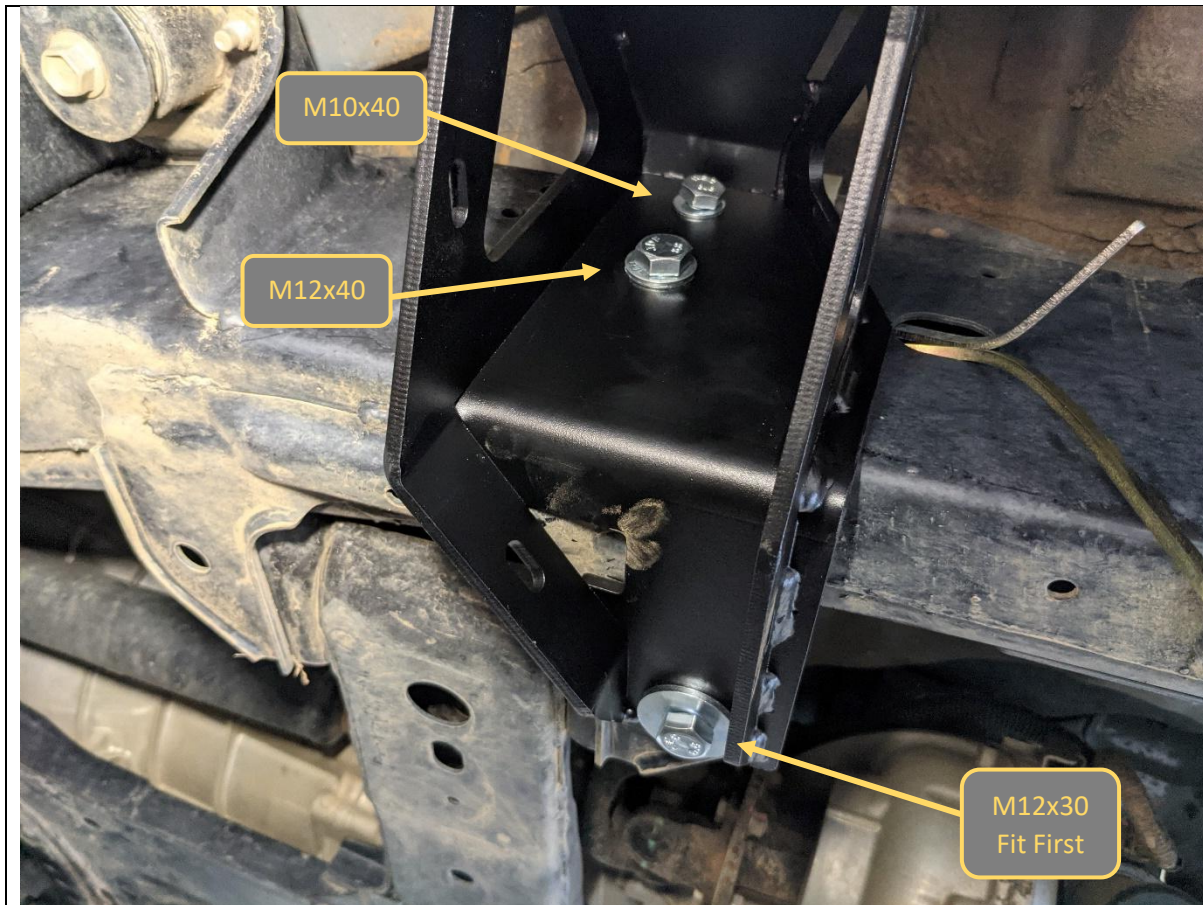
1. Remove Factory side steps if fitted by removing the 6x Nuts (2 Per mount) securing them to the body using a 12mm socket.
2. Discard Factory steps and fasteners.

**TOOLS REQUIRED**

12mm socket

**FASTENERS**6x Factory Flange head Nuts  
(per side)





3. Fit the front mount to the chassis rails, Using M12 and M10 Fasteners supplied.
4. First fit the lower pickup to the crossmember, Using M12x30 Bolt, Large washer, and M12 Flange Nut. This will help support the mount whilst you position the nut plates.
5. Secure with the M10 and M12 Bolts, Flat washers and Nut plates. Insert the nut plates through the slot in the chassis rail just behind the front mount location.
6. Ensuring that the mounting flanges for the slider are parallel with the chassis, tighten the mounting bolts in same order of bolt fitment.
7. Repeat for other side of vehicle

**TOOLS REQUIRED**

Jack  
18mm socket / Spanner

**FASTENERS**

M12x30Bolt  
M12 Flat washer  
M12 Flange Nut

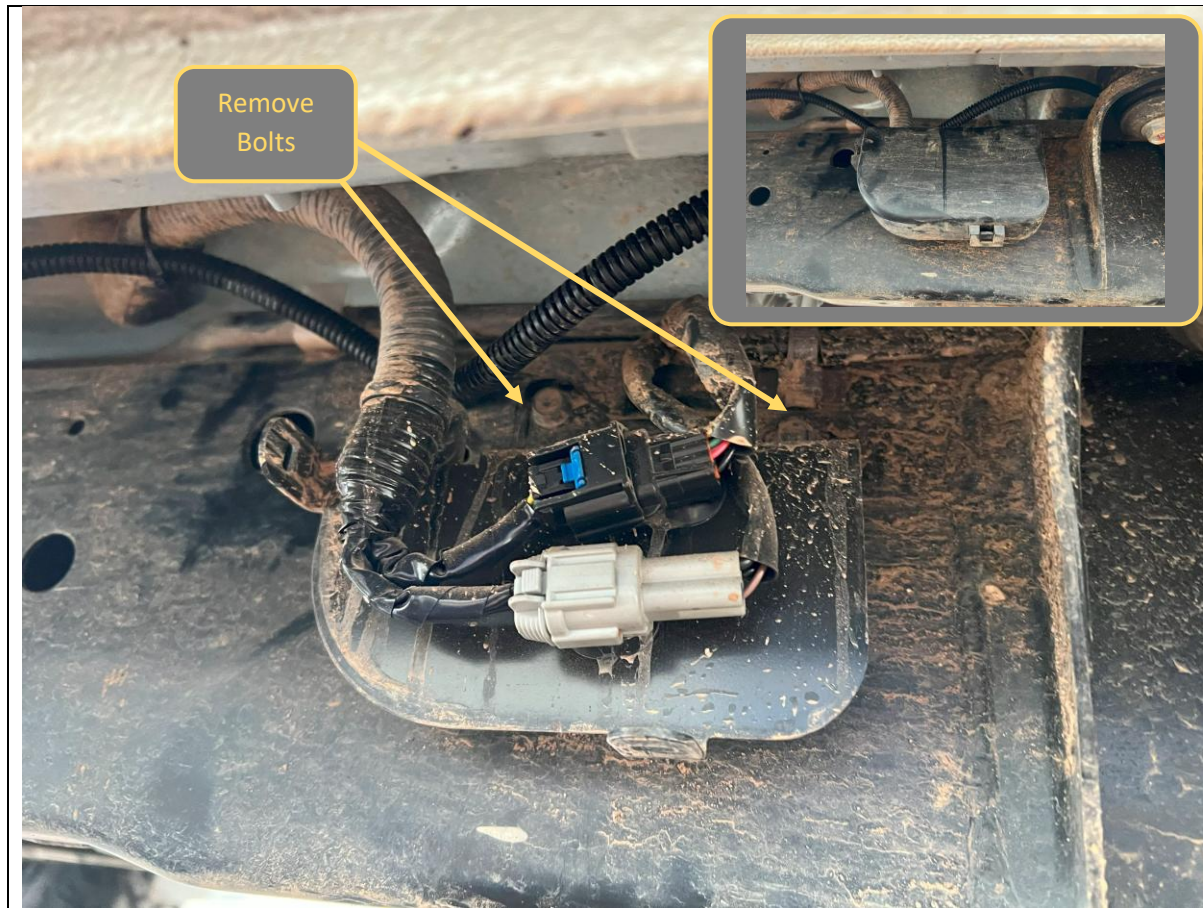
M12x40Bolt  
M12 Flat washer  
M12 nut Plate

M10x40Bolt  
M10 Flat washer  
M10 nut Plate



<div>8. Fit the brace plate to the front mounts using M8x20 bolts, flange nuts and flat washers.</div> <div>9. Once fitted tighten all bolts.</div>	<div>TOOLS REQUIRED</div> <div>13mm Spanner / Socket</div>
	<div>FASTENERS</div> <div>6x M8x20 Bolt</div> <div>6x M8 flat washer</div> <div>6x M8 Flange nut</div> <div>Per Side</div>



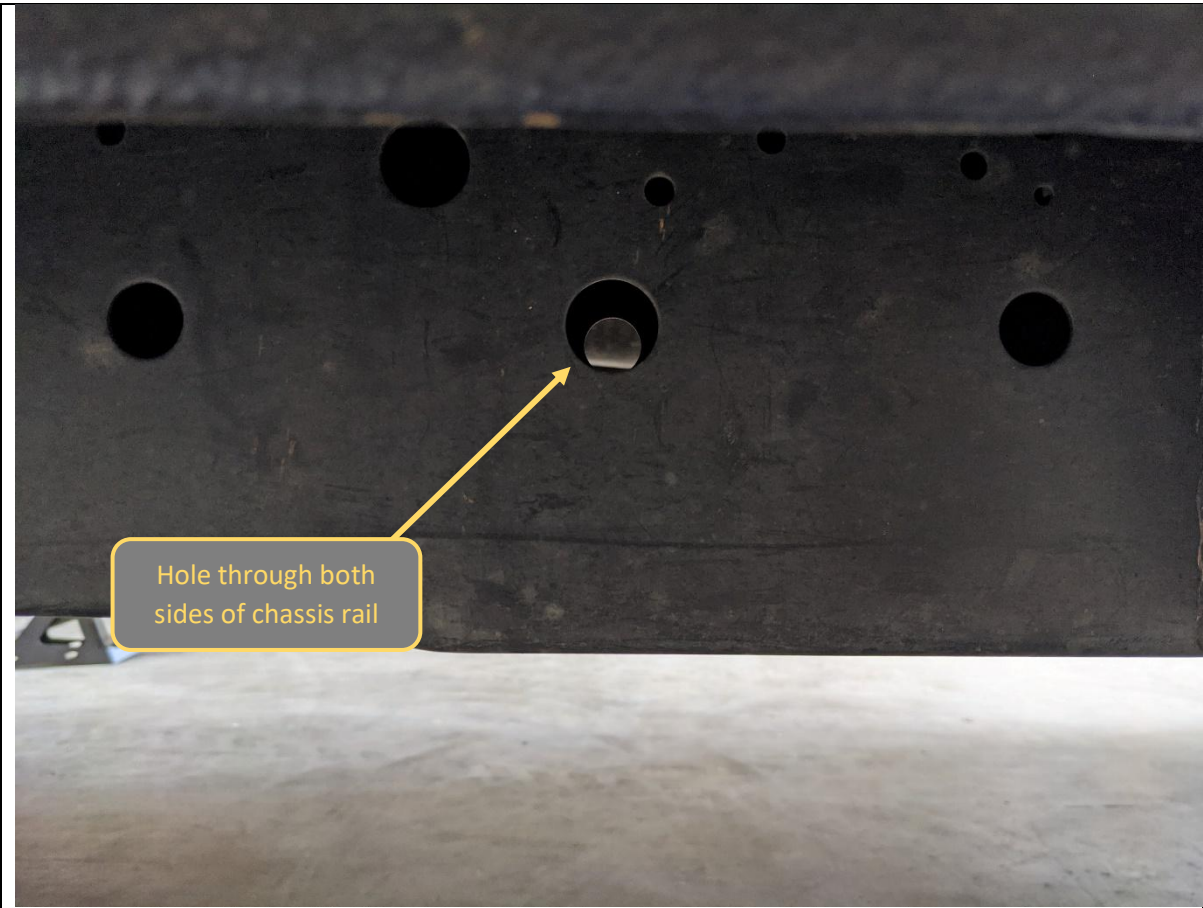


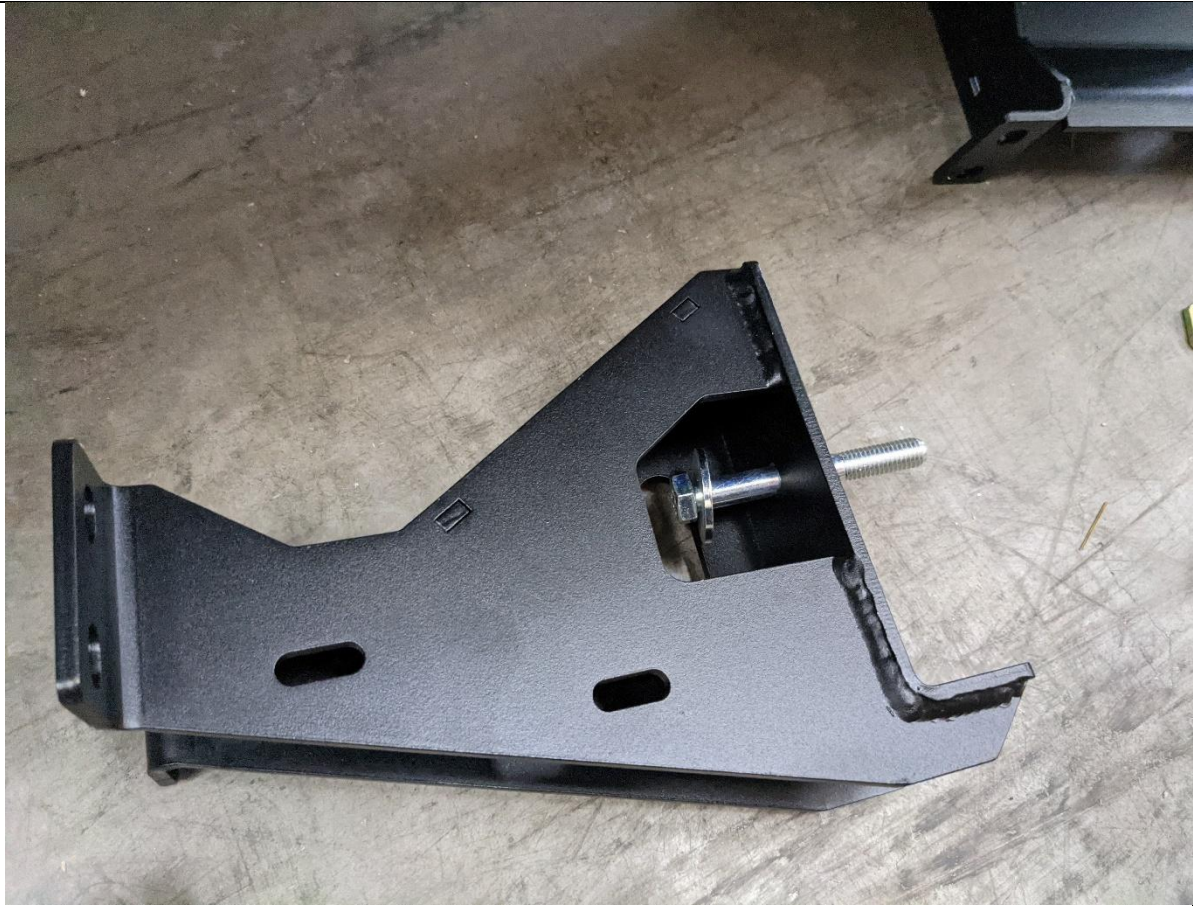
10. Some MY21+ models have a junction box bracket on the chassis rail that needs to be removed for the fitment of the sliders.
11. Unclip the plastic cover then remove plugs from the bracket using a trim tool.
12. Remove the bracket by removing the bolts securing.
13. Discard the bracket and neatly cable tie up wiring harnesses to others on top of chassis

**TOOLS REQUIRED**

Trim Tool  
Socket / Spanner set

**FASTENERS**

	
<div>14. Locate the chassis holes to be used for the mid mount on the passenger side, and Mid and rear mount on the driver’s side.</div> <div>15. These mounts use the Through holes that allow passage of bolt all the way through the chassis rail.</div>	TOOLS REQUIRED
	FASTENERS



16. Prepare mid mounts by pre-inserting the M12x90 Bolt, with flat washer, part way through the top mounting hole.

**TOOLS REQUIRED****FASTENERS**

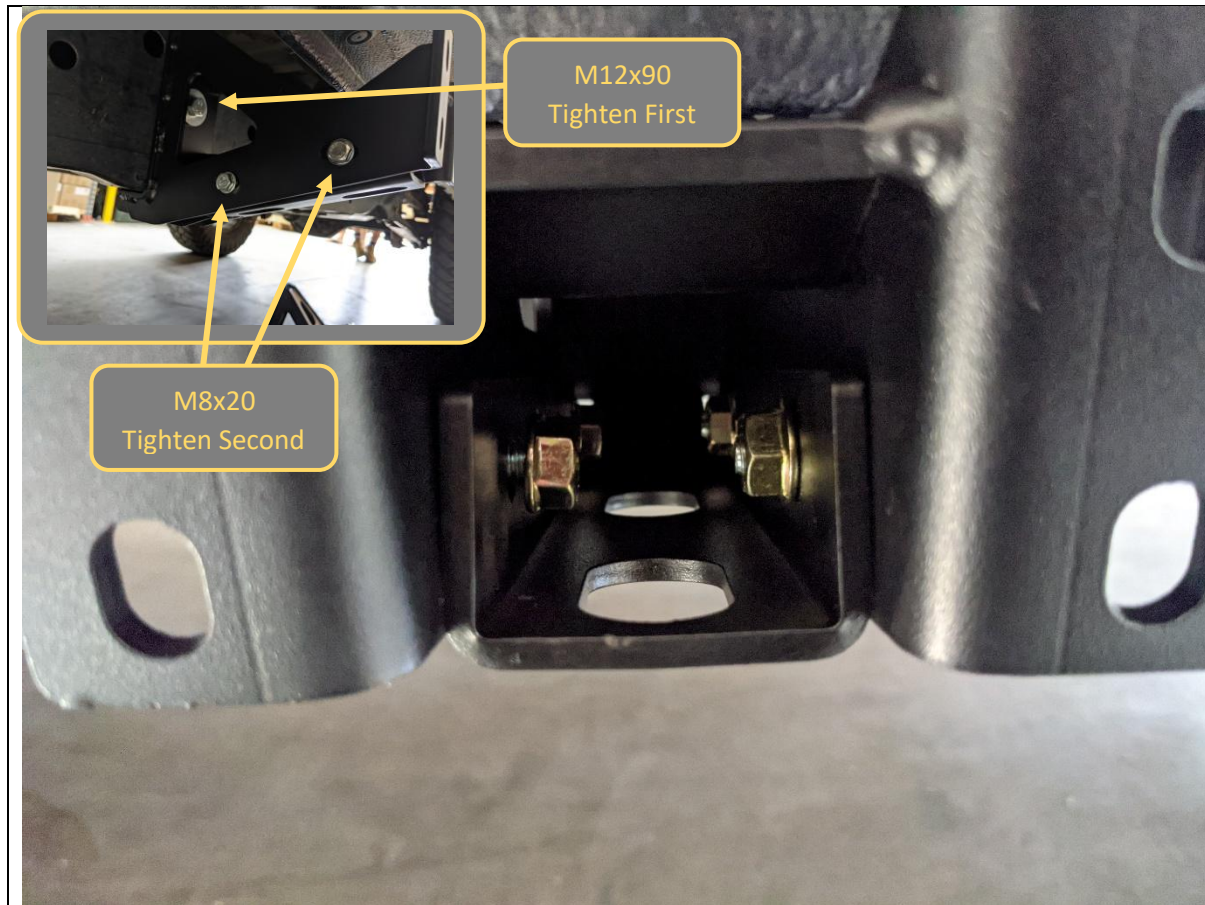
M12x90 Bolt  
M12 Flat Washer





17. Install the mid mount to the chassis, by inserting the M12 bolt through the concentric holes identified earlier.
18. Secure by fitting the bottom brace bracket and secure the M12 bolt to the welded in nut. The flanges of the brace bracket should sit inside the main mount

**TOOLS REQUIRED****FASTENERS**



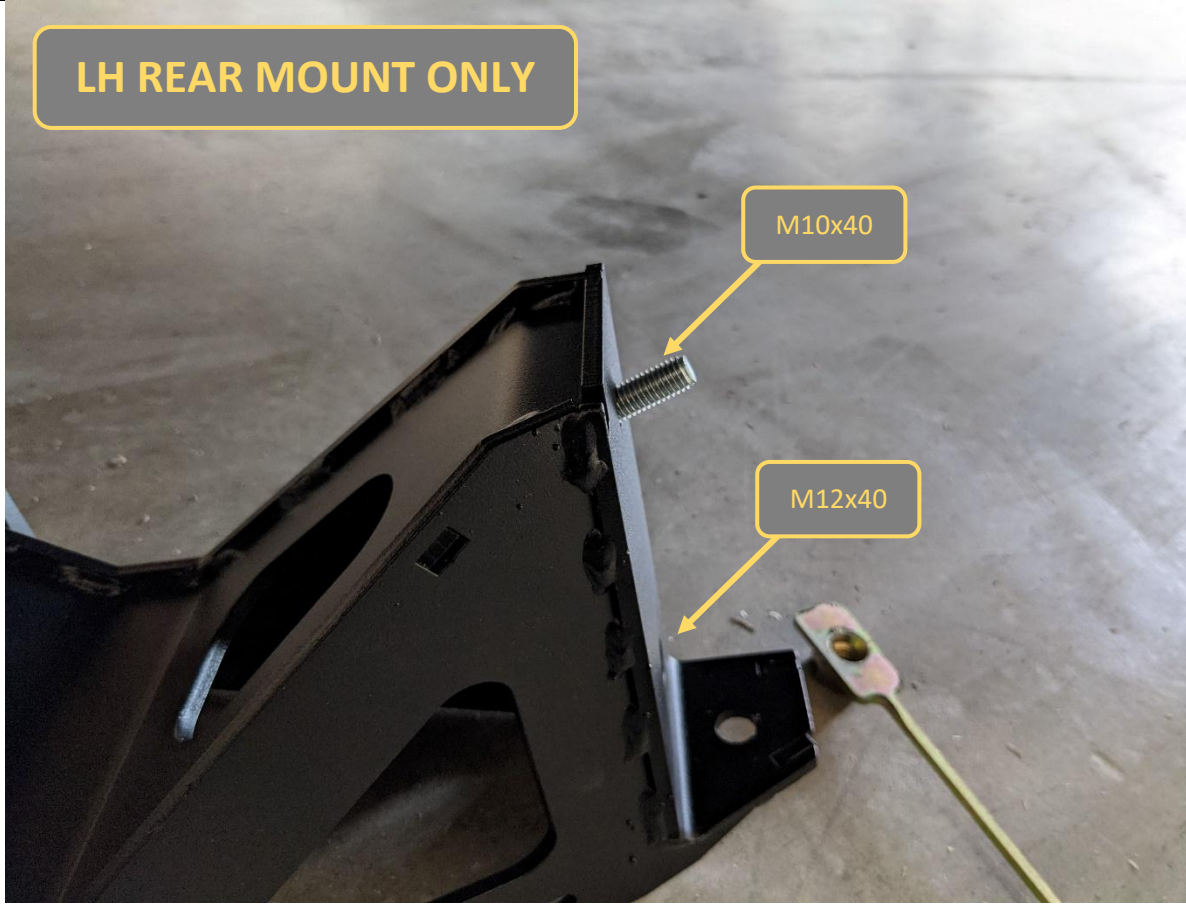
19. Fit the 4x M8x20 Bolts flange nuts and Flat washers to secure the bottom brace bracket to the main mount bracket.
20. Ensuring that the tops of the mounting flanges for the slider are parallel with the chassis, tighten the M12x90 Mounting bolt.
21. Once M12x90 is tight, Tighten the M8x20 Bolts.
22. Repeat process for all mounts of this type (LHS Mid, RHS Mid and RHS Rear)

**TOOLS REQUIRED**

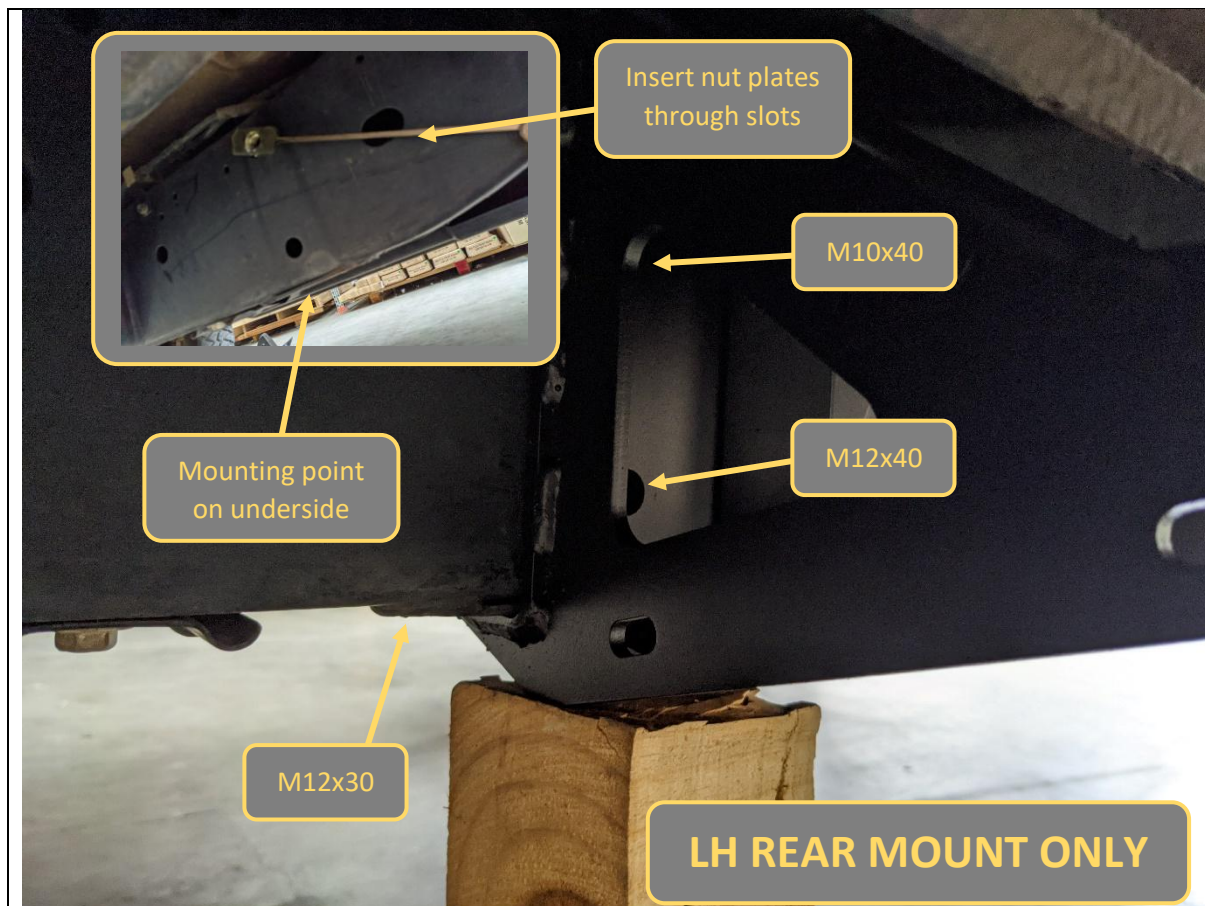
18mm Spanner / Socket  
13mm Spanner / Socket

**FASTENERS**

4x M8x20  
4xM8 Flat Washer  
4x M8 Flange Nut

	
<p>23. Due to fuel tank the LHS rear has a different mounting arrangement.</p> <p>24. Prepare mount for fitment by inserting the M10x40 bolt and flat washer through the top point in the mount.</p> <p>25. Also insert the M12x40 bolt and flat washer through the middle point in the mount.</p>	<b>TOOLS REQUIRED</b>
	<b>FASTENERS</b>  M10x40 bolt M10 flat washer  M12x40 bolt M12 flat washer





26. Offer up rear mount to mounting location, hold mount in place using jack and wood block to make positioning the nut plates easier.

It can also help to pre-bend the nut plates to the appropriate shape by holding them up in front of chassis to determine best bend locations.

27. First fit the top M10x40 Bolt, washer, and nut plate. Then the Lower M12x40 Bolt washer and nut plate. Once in position these will hold the mount in place and the securing jack can be removed.
28. Fit the bottom M12x30 bolt using supplied M12 nut plate held in position behind hole in chassis.
29. Ensuring that the mounting flanges for the slider are parallel with the chassis, tighten the All Bolts.

#### TOOLS REQUIRED

16mm Spanner / Socket  
18mm Spanner / Socket  
Jack / Wood block

#### FASTENERS

M12x30 Bolt  
M12x40 Bolt  
M12 flat washer  
M12 Nut Plate

M0x40 Bolt  
M10 Flat Washer  
M10 Nut Plate



30. Fit the 4x M8x20 Bolts flange nuts and Flat washers to secure the bottom brace bracket to the main mount bracket

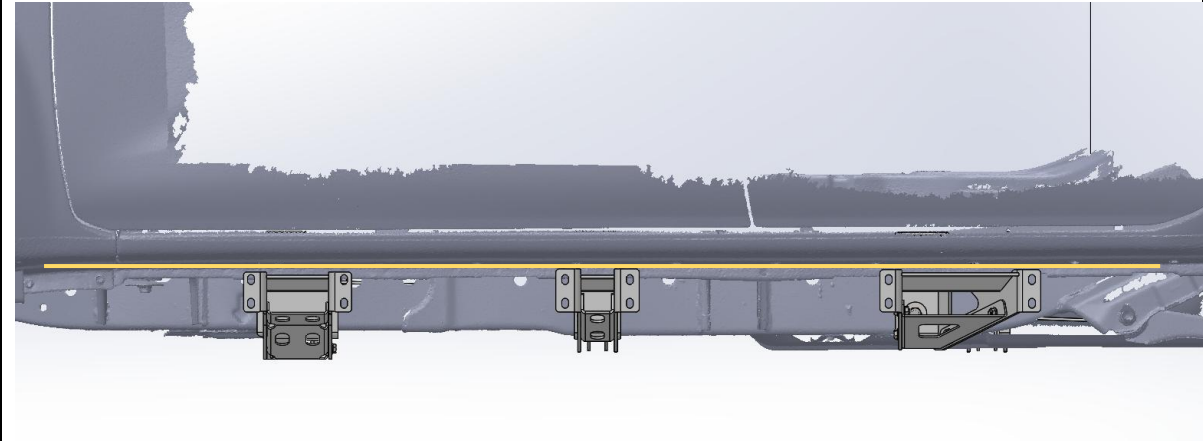
31. Tighten the M8x20 Bolts.

**TOOLS REQUIRED**

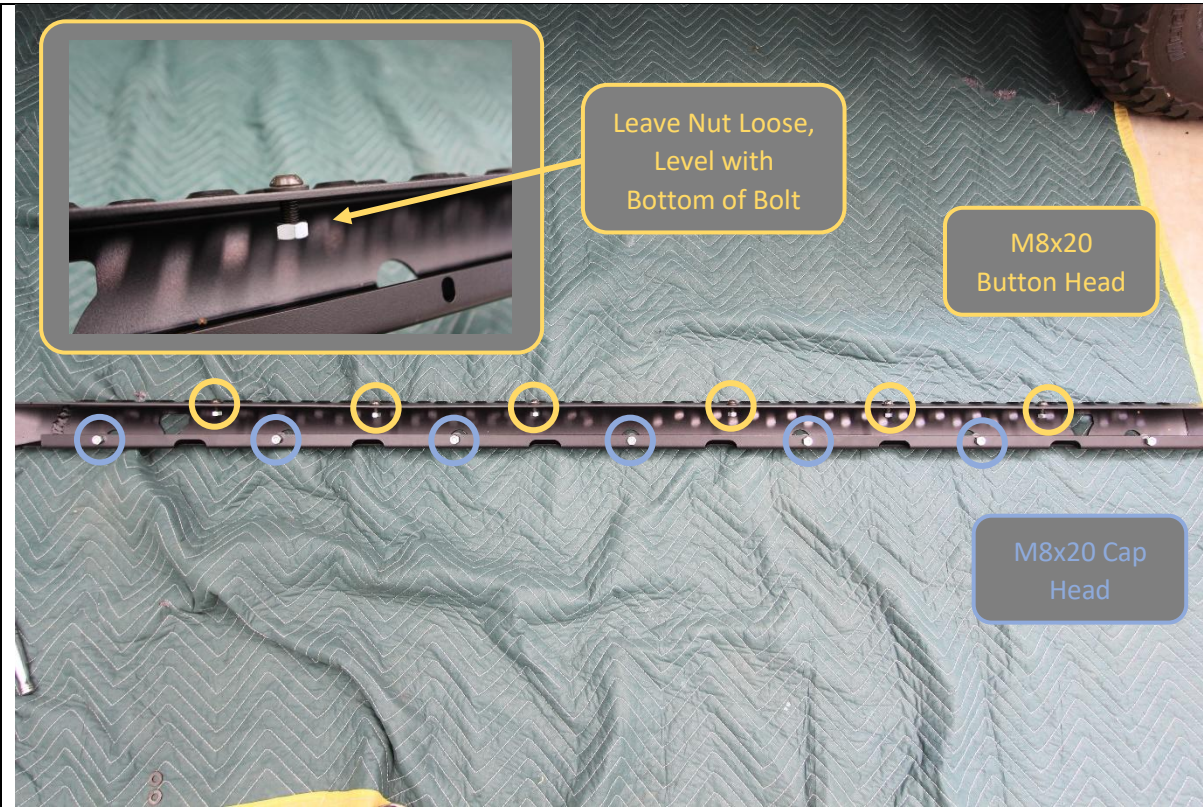
13mm Spanner / Socket

**FASTENERS**

4x M8x20  
4xM8 Flat Washer  
4x M8 Flange Nut

	
<div>32. Check that all mounting points are parallel to each other and approximately the same height.</div> <div>33. Loosen and adjust any mounts that require it adjust, then re tighten.</div>	<b>TOOLS REQUIRED</b>
	<b>FASTENERS</b>





<p>34. Prepare step plate by loosely pre fitting the fasteners to the step.</p> <p>35. Use M8x20 black button head screws, black M8 washers and M8 Nuts on 6x locations on top of step as shown.</p> <p>36. Use M8x20 cap head screws M8 washers and M8 nuts on 7x locations on bottom side of step.</p>	<p><b>TOOLS REQUIRED</b></p>
<p><b>NOTE THERE ARE 2 WAYS TO FIT THE STEP ON THE EXTRUSION, IF YOU FIND THIS WAY DIFFICULT SKIP STEP 34-38 AND GO TO STEP 39-44</b></p>	<p><b>FASTENERS</b></p> <p>6x M8x20 Black Button Head 7xM8x20 Cap Head 13x M8 Black Washer 13x M8 Nut</p>



37. Slide the step plate onto the main slider structural extrusion. Align the nuts as they enter the T Slots on the extrusion.
38. Center the Step on the extrusion, by measuring distance from extrusion to tip of step, and adjusting until both sides are equal.

**TOOLS REQUIRED****FASTENERS**



39. Lie extrusion down and place step on top.

40. Feed nut into slot with something long and skinny (like a dowl or piece of all thread). Do centre ones first the move outwards

**TOOLS REQUIRED**

Long dowel or skinny stick

**FASTENERS**





41. Thread cap screws into each hole

**TOOLS REQUIRED**

6mm Allen Key

**FASTENERS**

M8 x 20 Cap screws (7)  
M8 hex nuts (7)  
M8 flat washers (7)



42. Flip entire slider up as shown.

43. Clamp step hard to extrusion.

**TOOLS REQUIRED**

Clamps

**FASTENERS**





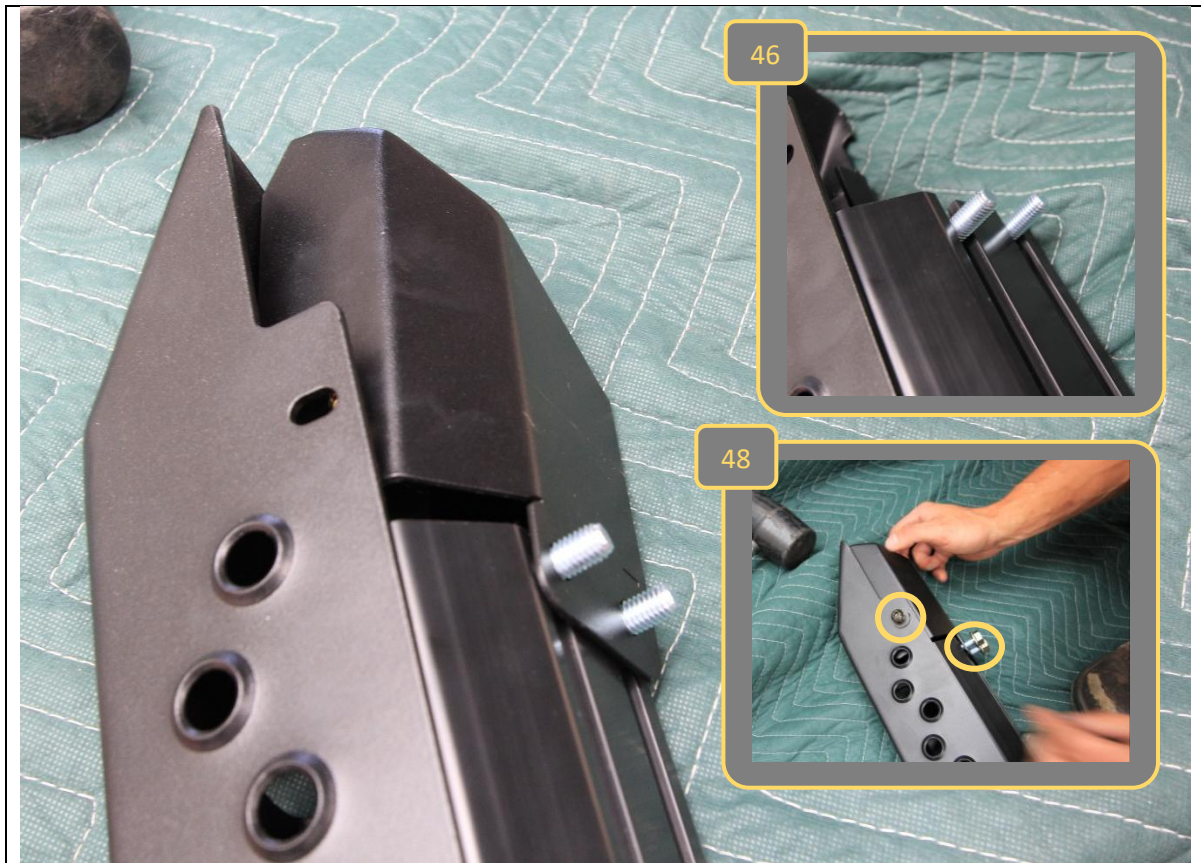
44. Using long tool feed nuts in to centre first and thread in with black M8 button head cap screws and washers.

**TOOLS REQUIRED**

5mm Allen key

**FASTENERS**

M8 x 20 BHCS black (8)  
M8 hex nuts (8)  
M8 flat washer black (8)



45. Fit end cap to one end of the extrusion
46. First slide 2x M10x25 Hex bolts into the T slots on back side of extrusion.
47. Fit end cap over these bolts.
48. Secure with M10 flange nuts on T slot bolts and M8x20 bolt in top, through tread plate. End cap should align with end of tread plate if tread plate is centered correctly.


**TOOLS REQUIRED****FASTENERS**

2x M10x25 Bolts  
1x M8x20 Button Head  
bolt  
1xM8 Flat Washer  
2x M10 Flange Nut



<p>49. Slide the 12x M10x25 Hex bolts into the T slots on back side of extrusion. 6 bolts per slot.</p> <p>50. Loosely arrange the bolts in 3x groups of 4, in approximate location of mounts, as shown.</p>	<b>TOOLS REQUIRED</b>
	<b>FASTENERS</b>





<p>51. Fit mirrored end cap to remaining end of slider, using 2x M10x25 hex bolts and M8x20 Button head bolt with flat washer as per previous steps 46-48.</p> <p>52. Check alignment of end caps, End cap should align with edge of tread plate if properly centered. Adjust end cap / tread plate position as required.</p> <p>53. Once happy with alignment tighten all bolts on slider extrusion, using 5/6mm hex key and 15mm spanner.</p>	<b>TOOLS REQUIRED</b>  5mm Hex key 6mm Hex key 15mm spanner
	<b>FASTENERS</b>  2x M10x25 Bolts 1x M8x20 Button Head bolt 1xM8 Flat Washer 2x M10 Flange Nut



54. With Assistance from another person, or mechanical lifting aid such as a lift trolley, Lift the slider onto the mounts.
55. Manipulation of position of bolts in T slot to align with mounts will be required to get slider on. Secure with M10 Flange Nuts.
56. Adjust fore / aft position of sliders on mounts to achieve even appearance as required.
57. Take care to ensure adequate clearance where panel curves toward wheel at front end, near end cap.

**TOOLS REQUIRED**

5mm Hex key  
6mm Hex key  
15mm spanner

**FASTENERS**

12x M10 Flange Nut



58. Tighten all mount to slider M10 flange nuts using 15mm spanner. A ratcheting spanner makes this process easier .

**TOOLS REQUIRED**

15mm Socket / Spanner

**FASTENERS**





59. Fit the Offroad Animal logo plate to the small gap between pierced features on tread plate, using the pre applied double sided adhesive.
60. Repeat the extrusion and step fitting process for the other side of the vehicle. Process is identical.
61. After that you are done!

**TOOLS REQUIRED****FASTENERS**



**Congratulations!**  
**Head for the tracks and enjoy your newly protected Navara!**